

**mindray**

## **DP-10Vet**

Digital Ultrasonic Diagnostic Imaging System



# DP-10Vet

Digital Ultrasonic Diagnostic Imaging System

## Ergonomic Design with Trendy Look

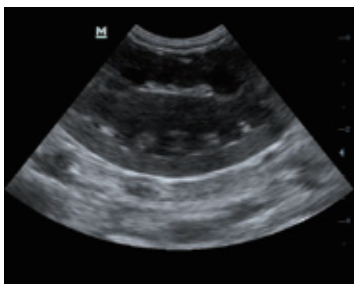
- 12.1 inch high definition LED with Full Screen design
- 30 degree tilting angle adjustable monitor for better viewing
- User friendly control panel with backlit for working in clinics
- Light and compact design offering extreme portability

## Good Image Quality for Wide Veterinary Use

- PW Doppler and Auto Trace reveal details of blood flow for more comprehensive diagnosis
- Tissue Harmonic Imaging for enhanced contrast resolution
- iZoom for instant full screen image expansion
- Abroad range of transducers covering abdomen, thoracic, cardiac, tendinous, small parts, urology and reproductive system for animals such as dog, cat, equine, bovine and ovine, etc.

## Saving the Scanning Time by Facilitating the Workflow

- iStorage for instant images and reports transfer to PC
- User-defined keys for programmable personalized operations
- 1.5h uninterrupted scanning with rechargeable battery
- 500GB hard disk for large patient data storage



Feline kidney



Canine bladder

P. La Barrena. Canal Imperial de Aragón S/N.  
31500 TUDELA. NAVARRA. (SPAIN)  
Tel.: 948 82 46 55 • 948 82 17 13  
e-mail: [cvm@cvm.es](mailto:cvm@cvm.es) • web: [www.cvm.es](http://www.cvm.es)

